

# MERIDIAN MALL

PATNA'S FIRST LIFE STYLE MALL



# MERIDIAN MALL

PATNA'S FIRST LIFE STYLE MALL





# MERIDIAN GROUP PRESENTS

## Patna's first lifestyle mall

Meridian Mall is set to become a landmark destination. Designed as a lifestyle mall, Meridian will feature specialty outlets, services, office space restaurants food courts and a two screen multiplex to address the growing lifestyle needs of a vast segment of the population. It will cover over 100,000 sft of well-designed space. And is strategically located within an exclusive, commercial hub in a central part of the city.

Meridian mall will offer many outstanding advantages for a retailer: a range of world-class facilities, easy access, a well-planned product mix and—as a result of all these—great exposure of products and services to a regular stream of both new and repeat customers.



Retail

Lease



Office



Multiplex

Exhibit



Sale

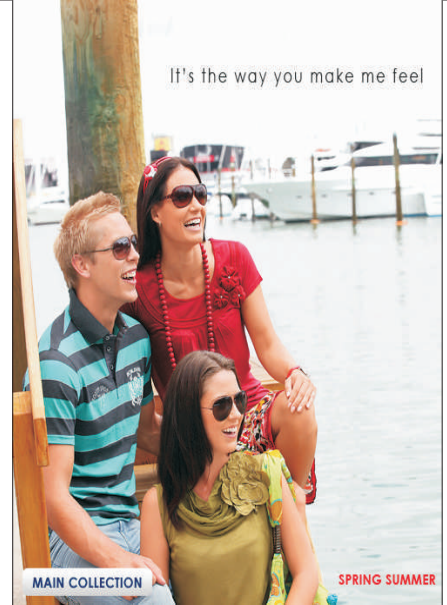






## Exclusive design features

- Four storey high shopping extravaganza
- A 3-storey high atrium
- A beautiful pedestrian plaza to offer picturesque views



## Easy flow & movement

- Entrance: Two at ground floor, to provide a double opportunity for footfalls
- Lifts: 3 customer lifts, 2 wide staircase, one escalator dedicated to shopping arena.
- Rest rooms: At each level, Disabled-friendly ramps, adequate parking

*the Mall expedition*



## Enhanced customer experience

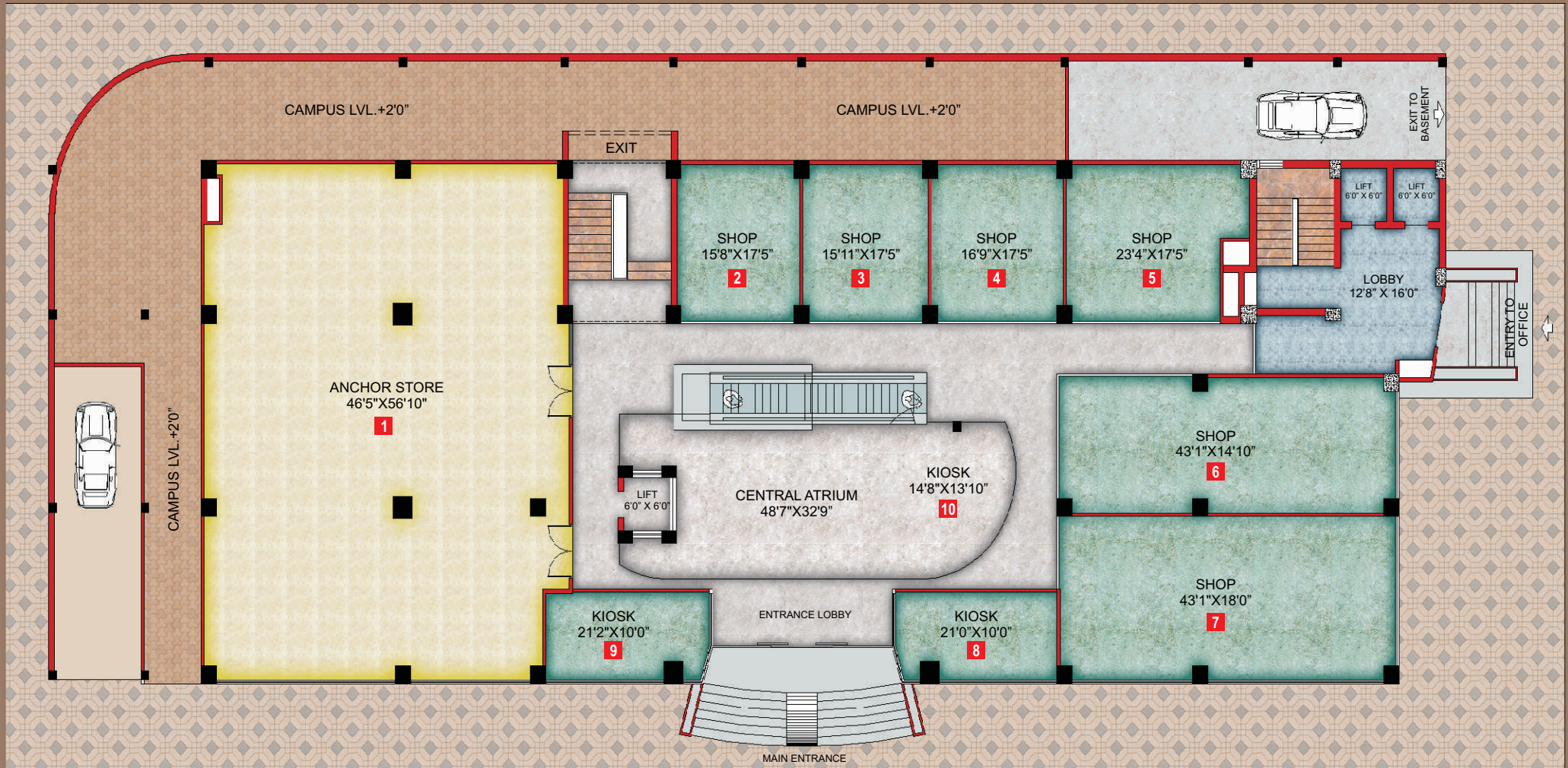
- Floor plans designed to draw consumers from one area / level to the next
- Resting space across all levels, with plenty of indoor and outdoor seating
- Interesting features to create a beautiful, seamless feel
- Dedicated Food court at 4th level







*the gate way to New world*



GROUND FLOOR



## National | International | brands

Leading brands like Landmark, Westside, Lee, Reliance as anchors and will attract a steady stream of customers.

Specialty outlets—reflecting an excellent combination of international, national and local brands across a range of general, specialised and niche-product lines—will become a further draw.



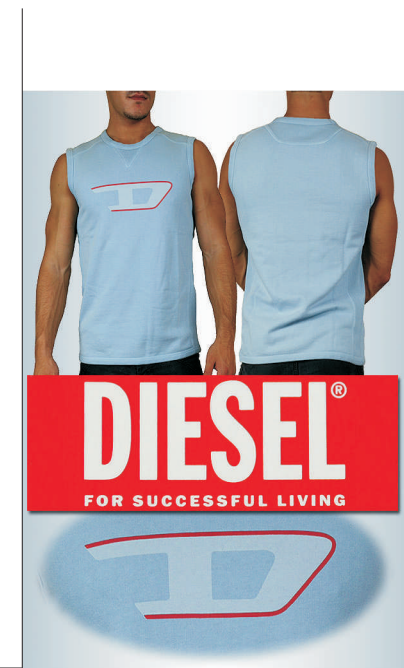
## What's in store

Retail facilities available

- Anchor stores
- Department and mini-anchor stores
- Vanilla stores
- Kiosks



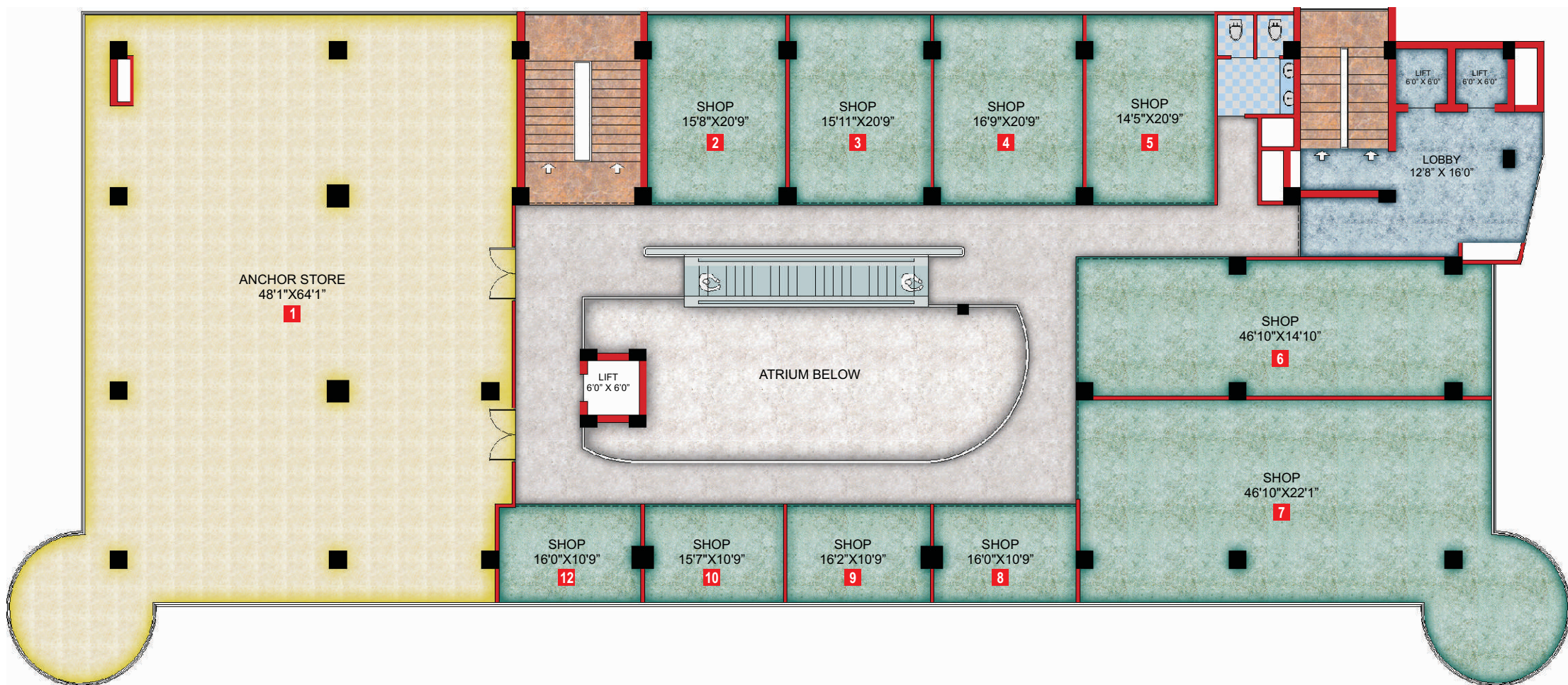
*the Shopping  
experience*







*the pleasure of Non stop shopping*



FIRST, SECOND & THIRD FLOOR



# the Fine dining sense



## From fast food to fine dining

Meridian Mall's food court, restaurants and café will offer variety in cuisines, style of outlets and types of service. The panoramic view of the city are expected to be a special attraction.

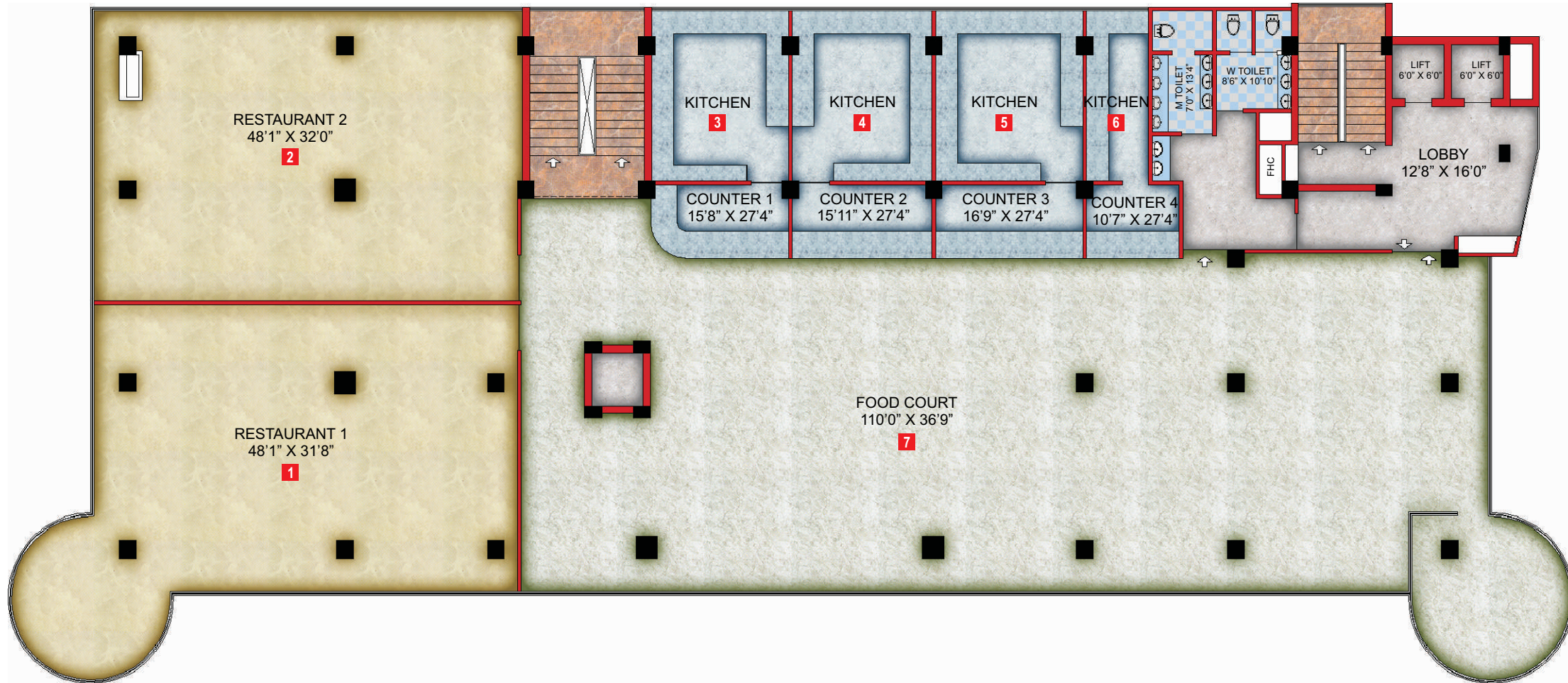
- Large multi-cuisine food court with up to 6 counters. Will feature indoor and outdoor seating for approximately 125 people
- Up to 2 specialty restaurants







*the feast to Your sense*



FOURTH FLOOR





*the Business  
Pleasure*

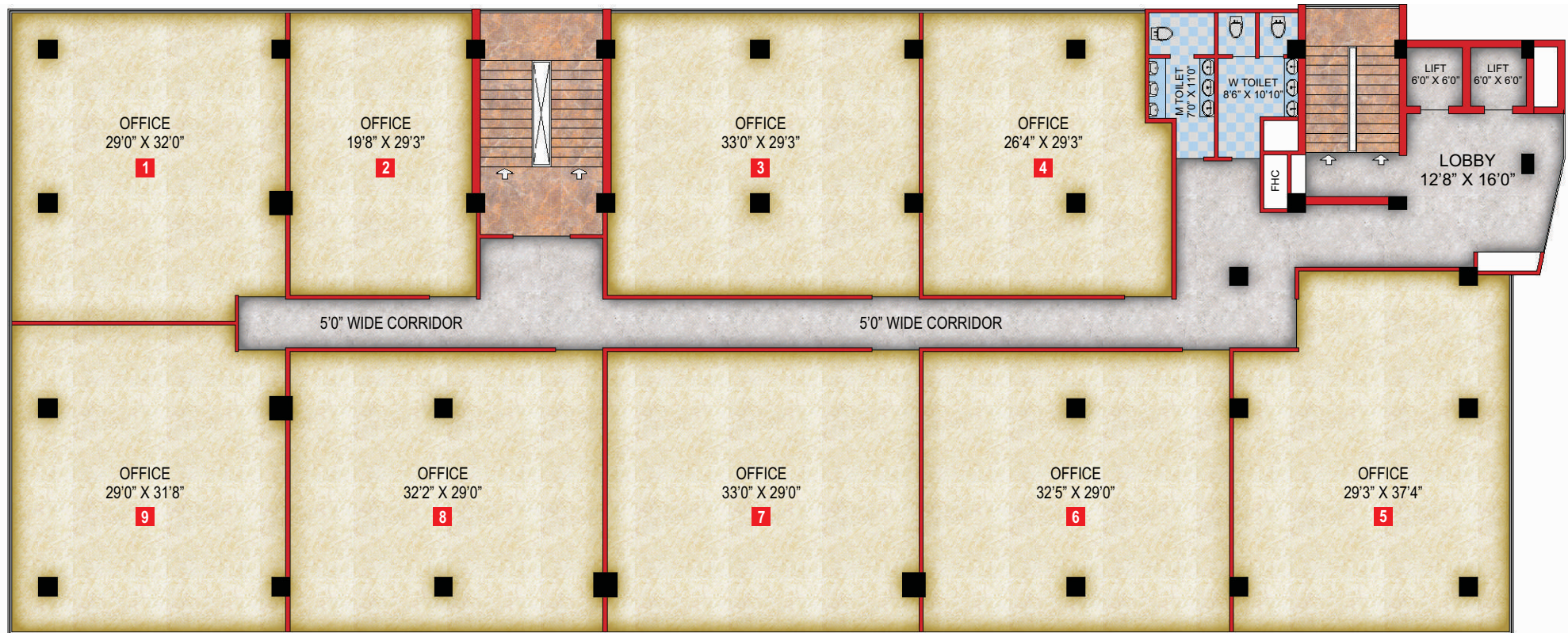


## Operating from Meridian Mall.. Business is a pleasure

Any way you look at it, you can be sure that Meridian Mall will draw more people, more often, for longer periods of time. So your relationship with Meridian will not only be a very enjoyable one, but also a very successful one. If you share the same vision as we do and would like to nurture your business with the same professionalism, efficiency and customer-focused approach that drives us, do get in touch. We would like you to become a part of this new and exciting retail experience.



*the place to define Growth*



FIFTH, SIXTH & SEVENTH FLOOR



# the Entertainment Quarter



## Two screen Multiplex Plays drama, action, thriller...

The entertainment facilities at Meridian Mall will translate into a constant flow of people...who will come to the mall for a movie, a show or an event, and also to shop or dine at Meridian in the course of their visit.

Events, entertainment and the multiplex

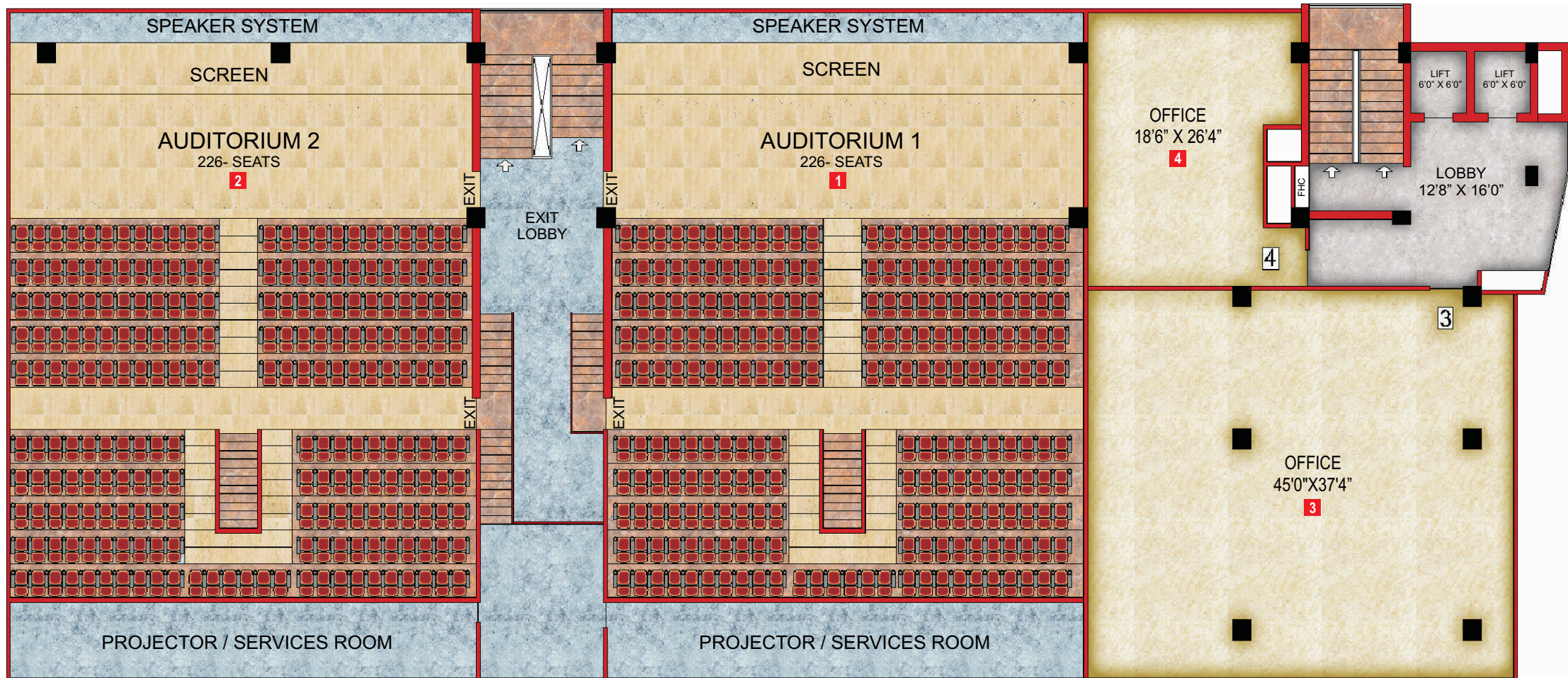
- Amphitheater, located at the plaza level. Will seat up to 250 people.
- Event space at ground floor lobby area
- Children's gaming area
- 2-screen multiplex with combined capacity of around 500 seats





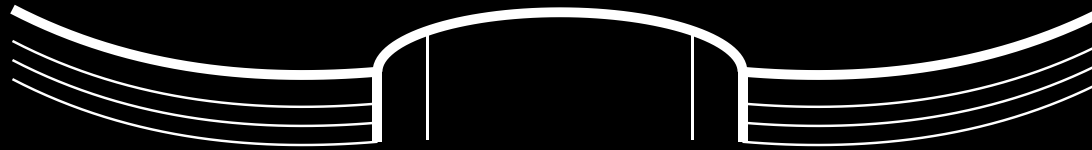


# *the magic of Superior viewing*



EIGHT & NINTH FLOOR





# MERIDIAN MALL

PATNA'S FIRST LIFE STYLE MALL



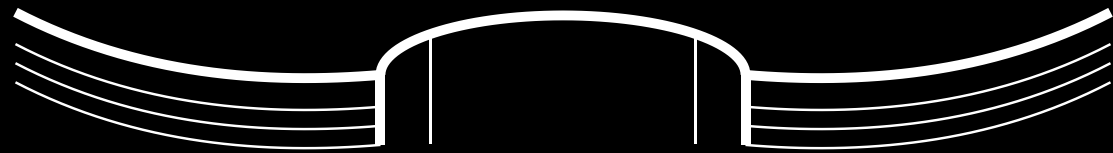
## Developed and promoted by Meridian Group

Established in 1999, Meridian Group is a Patna headquartered, 50+ people organisation with a proven record in property development, property management services, hospitality and education. The organisation has over 25 completed buildings to its credit and many others in various stages of execution.

Meridian Mall are being developed and promoted by Meridian Group. As an extension of its corporate philosophy of providing "a better quality of life", Meridian Group has undertaken several initiatives towards providing better living space for its citizens.

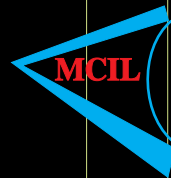






# MERIDIAN MALL

PATNA'S FIRST LIFE STYLE MALL



Corporate office: MERIDIAN CONSTRUCTION INDIA LIMITED., SUKRITI APARTMENTS, #305, S.P. Verma Road, PATNA, Pin-800 001.

PH: Off - 0612 - 2225026. Mobile: +91 93344 15244 / +91 93341 12227

Bangalore office: MERIDIAN GARDEN, Chola nagar, Cholanayakanahalli, Kasaba Hobli, R.T.Nagar Post, Bangalore North, Bangalore - 560 032.